



CORE TREE RING



The CORE Tree Ring is manufactured from 1.6mm mild steel and is hardy enough to handle ride on mowers and light vehicles. This steel ring can be quickly installed with no specialist tools required. It provides the perfect edge restraint in a variety of landscaping applications.



All of our Tree Rings except our weathered steel (Cor-Ten effect) have a 20-micron Galvanised Zinc coating. Our (RAL) coloured edgings have a further 110-micron UV resistant polyester powder coating preventing colour fade, forming a durable scratch resistant barrier guaranteeing a 20yr plus product life.

COR-Ten forms a stable rust-like appearance when exposed to the elements. In simple terms, the steel is allowed to rust and this oxidised layer forms a protective coating that dramatically slows the rate of future corrosion. Please allow 6-8 weeks for oxidation to occur.



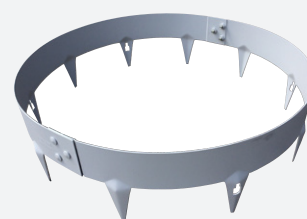
The ground spike incorporates a unique fold along its centre to provide maximum strength, reinforcing the spike, making it ideal for use in tougher ground conditions. If soft ground is encountered, a 300mm rebar extension simply fixes through the ground spike to provide additional stability.



Please see our CORE TREE RING installation sheet for more information, a copy of the install sheet is supplied with each pack of edgings.

For any additional information or specification queries please give our technical team a call on freephone 0800 118 2278.

SIZES



Face Height	Spike Length	Ring Diameter
65mm	85mm	600mm
65mm	85mm	900mm
65mm	85mm	1200mm

COLOURS & FINISHES



BLACK



BROWN



GREEN



GREY



GALVANISED



COR-TEN

TECHNICAL SPECIFICATION

Material	Flexible Mild Steel
Thickness	1.6mm
Face Height	65mm
Spike Length	85mm
Quantity Per Pack	1 ring per pack

BENEFITS



EASY INSTALL



WEATHER RESISTANT



STRONG