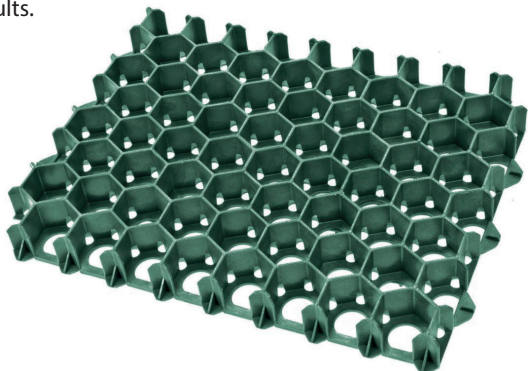
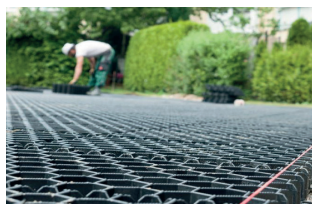


CORE PRO GRASS

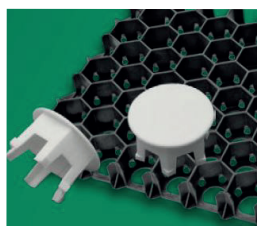
This product can be specified for all types of grass parking and driving areas, from overflow car parks to Fire Engine access routes. The grid is first filled with soil and then seeded for best results.



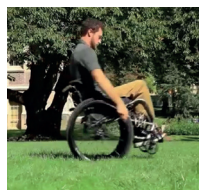
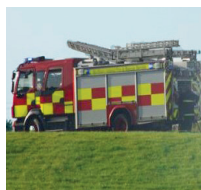
Our CORE PRO GRASS provides an incredibly high load bearing of 100tn/m², making it suitable for heavy vehicles and high traffic loads. The panels are manufactured with high density polyethylene which means it is extremely strong & durable, enabling it to absorb immense pressure from heavy vehicles and livestock.



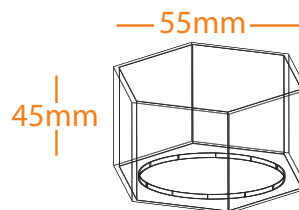
The panels will automatically stabilise each other once installed and the panels have lateral drainage holes to prevent a build up of water within the cells. This combination of vertical and lateral drainage help to maintain the perfect growing conditions for grass. Once the growth has begun a full mineral fertilizer should be added. Once the grass has grown to approx 5-8cm above the honeycomb it should be cut back to approx. 3cm to promote the growth of lower level grass. Substrate settlement should be compensated with sharp sand.



White 'plug-in' markers are available to create parking bays, this system will comply with current UK building regulations for commercial car parks.



For any additional information or specification queries please give our technical team a call on freephone 0800 118 2278.



TECHNICAL SPECIFICATION

Material	Recycled HDPE
Sheet Size	(500x390mm) 0.195m²
Weight Per Panel	1.1 Kg
Cell Wall Thickness	3mm
Suitable Fill Material	Soil or gravel if required
Depth of Cells	45mm (width 55mm)
Resistant Against	Ammonia / UV / Frost
Fill Rate	45 Litres / m²

APPLICATIONS

- ☒ Grass Domestic Driveway
- ☒ Grass Parking Area
- ☒ Suitable for HGV Through-Traffic
- ☒ Disabled Friendly Access Route

BENEFITS

 DDA COMPLIANT	 ECO-FRIENDLY	 LOW COST
 NO MUD	 FREE DRAINING	 EASY INSTALL
 STABILISES GRASS	 STRONG	 SUDS COMPLIANT

